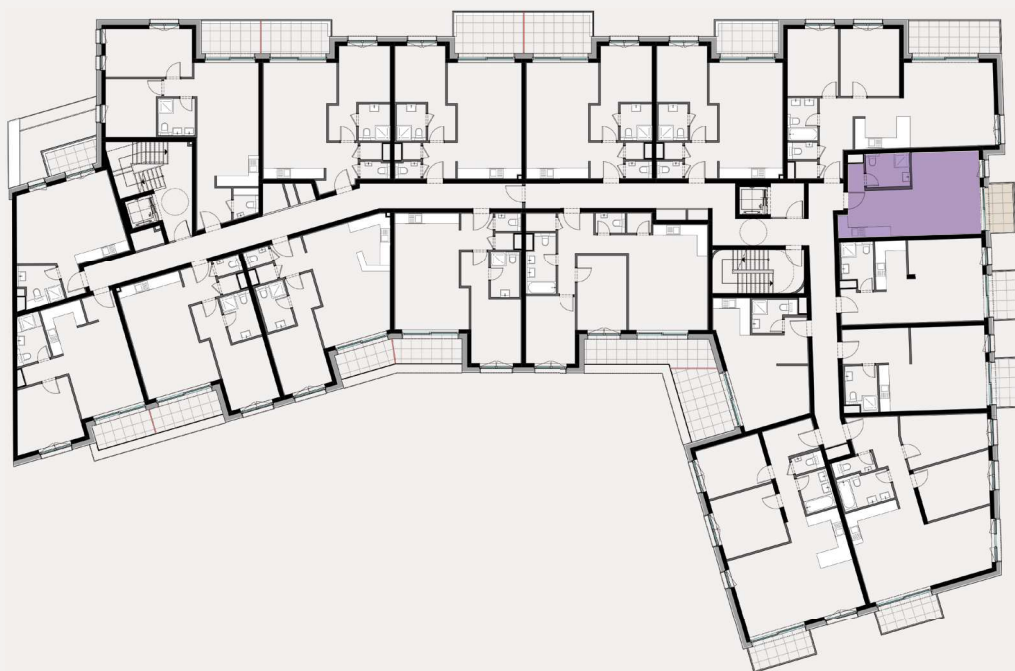


échelle 1:100



STUDIO N° 1-08

STUDIO
ÉTAGE: 1^{er} étage
SURFACE: ± 38.5 m²

Séjour/cuisine/
Hall: ± 33.5 m²
SDD: ± 5.0 m²
Balcon: ± 4.0 m²

architecture & urbanisme 21

YVONNE SCHILTZ ET ASSOCIÉS
42A, Place Guillaume II • L-1648 Luxembourg